



ND System of Care

Children's Cabinet – February 20, 2024



Health & Human Services

Agenda

- To provide an overview of System of Care (SOC) framework and grant initiative.
- To highlight opportunities for cross-system partnership.
- To update on infrastructure and service implementation milestones and priorities.



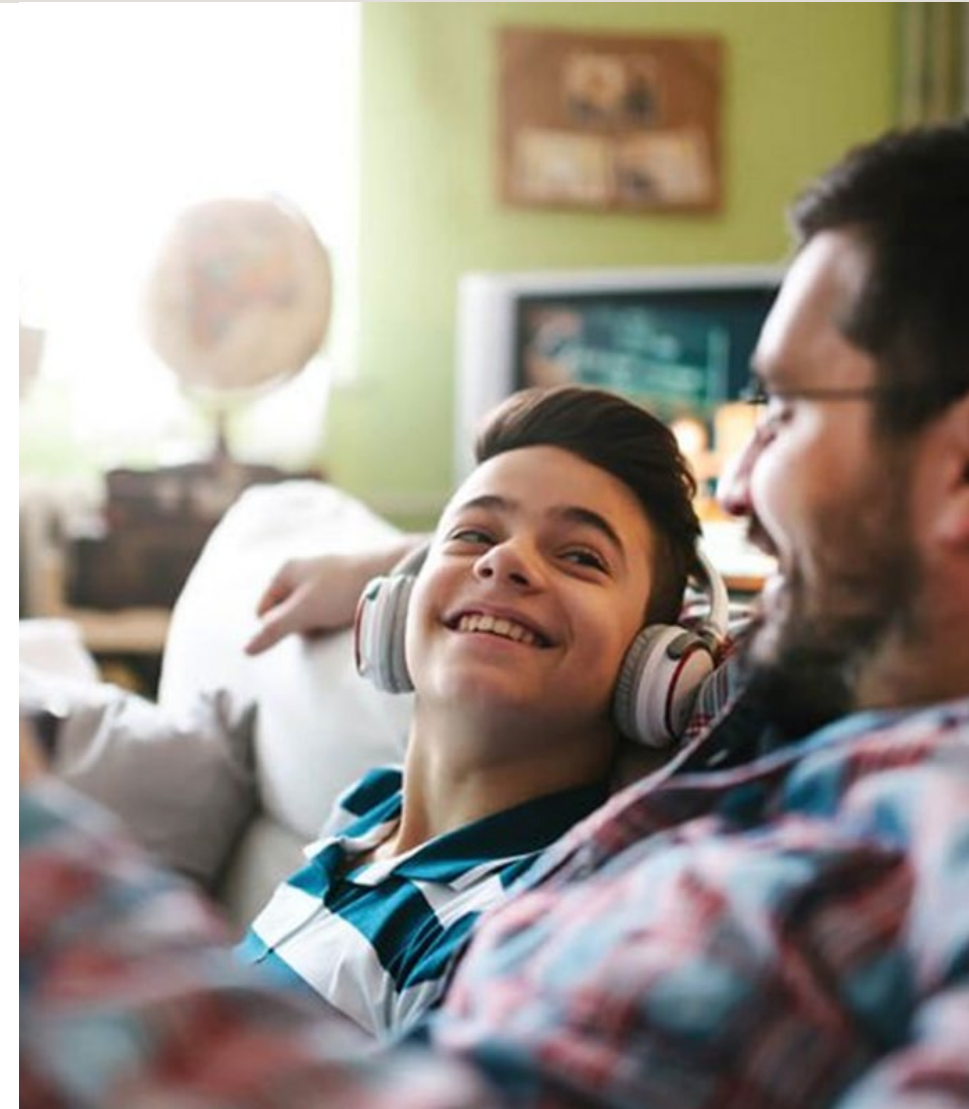
HSRI Aim 5

Enhance and streamline
System of Care for
Children with complex
needs and their Families.

Goal 5.1 Establish funding and full-time staff to support the development of System of Care for Children with complex needs and their families

Action Steps:

- Secure SAMHSA funding for System of Care Expansion (complete)
- Hire and onboard Clinical Administrator and Lead Family Administrator as required for grant administration (complete)
- Assess need for Equity and Cultural Competency Lead Administrator to support implementation of System of Care goals to develop culturally accessible and inclusive services and supports (complete)



ND SOC Grant Overview

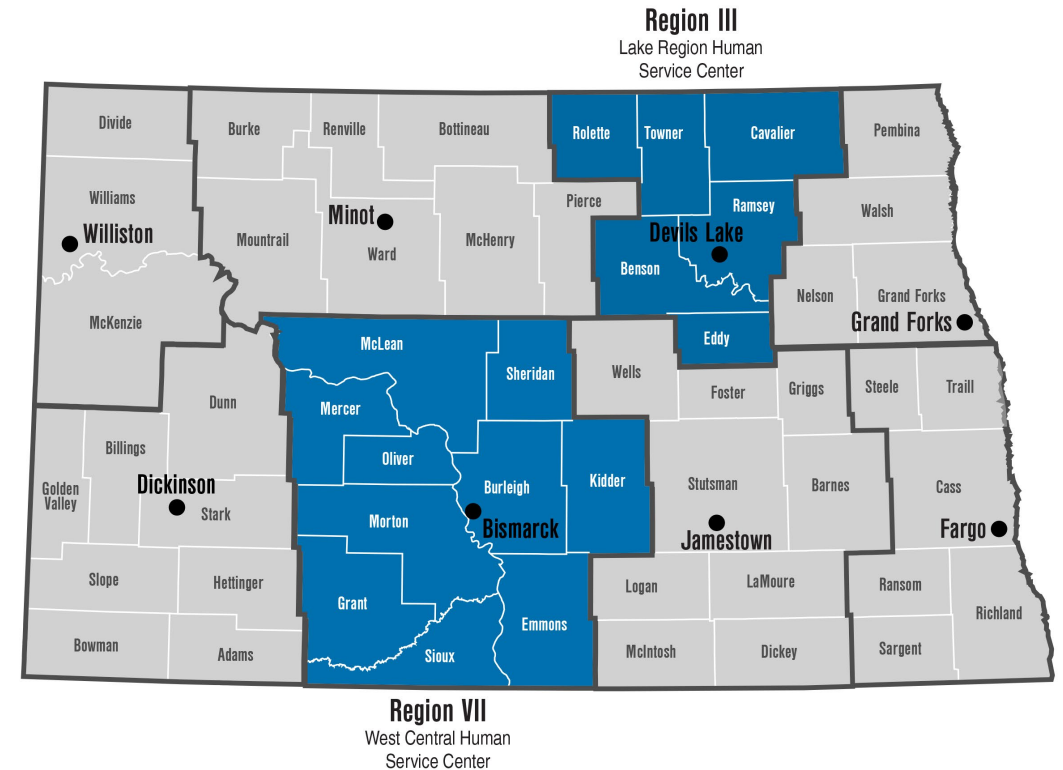
Substance Abuse and Mental Health Services (SAMHSA) System of Care (SOC) Expansion and Sustainability Grant – one of six states awarded \$3 million per year for 4 years.

SOC Grant Purpose

We will utilize funding to build and expand a comprehensive set of community-based behavioral health services and supports for children and youth with serious emotional disturbances (SED), birth - age 21, and their families.

Geographical Catchment Areas

These regions include four tribal nations: The Standing Rock Sioux Tribe, Spirit Lake Nation, the Turtle Mountain Band of Chippewa Indians and Mandan Hidatsa Arikara Nation.



Serious Emotional Disturbance (SED)

Refers to a diagnosable mental, behavioral, or emotional disorder in the past year, which resulted in functional impairment that substantially interferes with or limits the child's role or functioning in family, school, or community activities.



Current prevalence of
SED range from 4.3-
11.3% of children

It has been estimated
that 75-80% of children,
youth, and young adults
with SED/SMI do not
receive adequate
treatment.

Untreated symptoms
lead to negative impacts
on academics,
employment, physical
health, substance use
risk, criminal justice
involvement, and poor
life indicators.





Multi-systemic Involvement (BH, DD, Health, School, Justice, Child Welfare)



What is a System of Care?

A *System of Care* is a spectrum of effective, community-based services and supports for children and youth with or at-risk for mental health or other challenges and their families that...

...is organized into a **coordinated network**;

...builds meaningful **partnerships** with families & youth;

...addresses **cultural and linguistic needs**

Primary Goal: To help families function better at home, in school, in the community, and throughout life.

System of Care Values

Community-Based

Youth and Family Driven

**Culturally and
Linguistically Responsive**

ND System of Care – Goal One

To **increase access to high-quality and culturally appropriate services and supports** available to children with SED and their families in the identified regions (HSRI Goal 5.3).

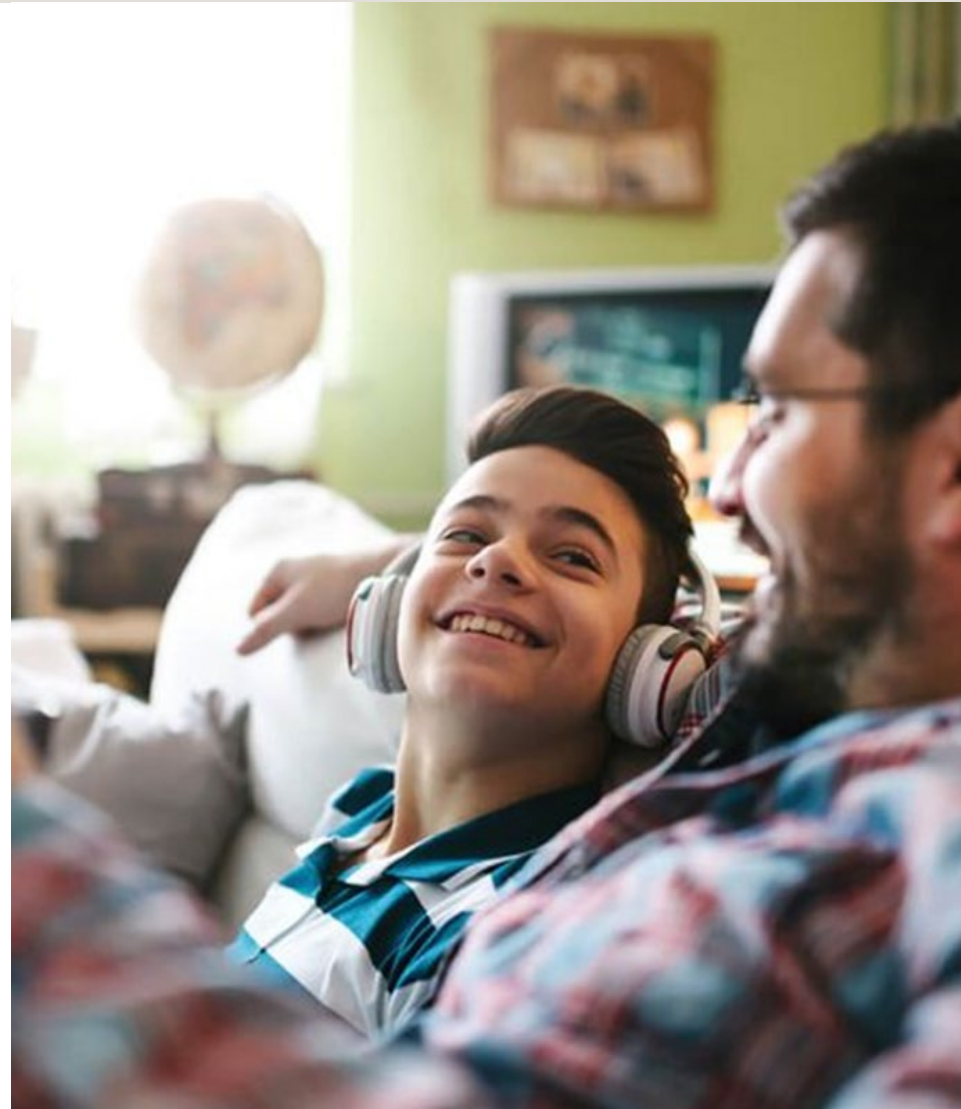
- Diagnostic and Evaluation Services
- Outpatient services
- 24-hour crisis emergency services
- Intensive home-based outreach services and case management
- Intensive day treatment services
- Respite care services
- Therapeutic foster care services
- Transition from the child system to the adult delivery system



ND System of Care – Goal Two

To develop a sustainable infrastructure to support the System of Care approach for ND children with SED and their families (HSRI Goal 5.2).

- Coordinated, referral pathways
- Integration of trauma-informed care elements throughout project
- Promote and sustain family and youth engagement in the SOC (e.g. family and youth peer support, family and youth leadership development)
- Develop a sustainability plan
- Provide training on SOC, evidence-based practices and community defined interventions
- Develop new and/or maintain existing collaborative partnerships across child-serving agencies, providers, and programs
- Develop a governance structure for SOC



SOC Updates - Infrastructure

Milestones:

- Completed a SOC Needs Assessment (Spring 2023).
- Completed over 175 virtual and in-person meetings, presentations, and trainings.
 - Prioritizing schools and educational entities, child welfare, juvenile justice, private behavioral health providers, and other community-based entities that serve children with SED.
 - Tribal Nations – monthly engagement with Turtle Mountain, Spirit Lake, and MHA Nation
 - Family-run organizations and individuals with lived experience.
- Established and continue to convene local steering committees in each of the two implementation regions.





To create a vision for the development of youth and family driven, community-based, and culturally appropriate children's behavioral health services and supports. The steering committee will provide guidance on local strengths, barriers to services, and opportunities for change.

- Provide guidance and prioritize **infrastructure and service implementation** in the region.
- To inform system and governance structures about the **lived experiences** of youth, families, and our child-serving workforce.
- To develop cross-system **partnerships and relationships** that assist in cultivating change.

SOC Updates - Services



Services and Supports

- Intensive Home and Community-Based Services:
 - Partial Hospitalization Program
 - Children's Service Grants
 - Dakota Boys and Girls Ranch PRTF Aftercare
 - Crisis Stabilization / Certified Shelter Beds
 - Functional Family Therapy (WCHSC)
 - Community Connect for Transitional Aged Youth
- Crosscutting and Coordination Services and Supports
 - National Wraparound Implementation Center – High Fidelity Wraparound Technical Assistance
 - Parent and Caregiver Peer Support

SOC Updates – Services (cont.)



High Fidelity Wraparound (HFW) Implementation

- HFW is an evidence-based, intensive care coordination approach grounded in the standards and requirements established by the National Wraparound Implementation Center.
- The interactive, team-based approach employs ten principles and four phases to help families:
 - Reach their desired outcomes
 - Develop skills, confidence, and natural support systems for the future
- The youth served by HFW have multi-system involvement and complicated challenges. HFW seeks to intervene before these challenges can lead to the use of restrictive levels of care, high costs, and poor outcomes.

SOC Updates – Services (cont.)



Parent and Caregiver Peer Support

- Have lived experience as a parent or primary caregiver who has navigated the youth serving system on behalf of their child(ren) with social, emotional, developmental, health, and/or behavioral healthcare needs.

“Peer parent support is the instrumental, social and informational support provided from one parent to another to reduce isolation, shame and blame, to assist parents in navigating the child serving system.”

NWIC/Innovation Institute



Thank You

Clinical Administrator, System of Care

- Katie Houle
- khoule@nd.gov , 701-328-8832